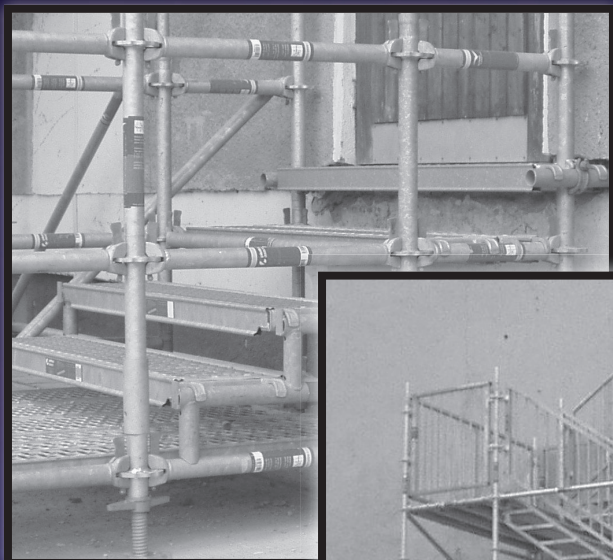


Plettac Assco Stairway Towers



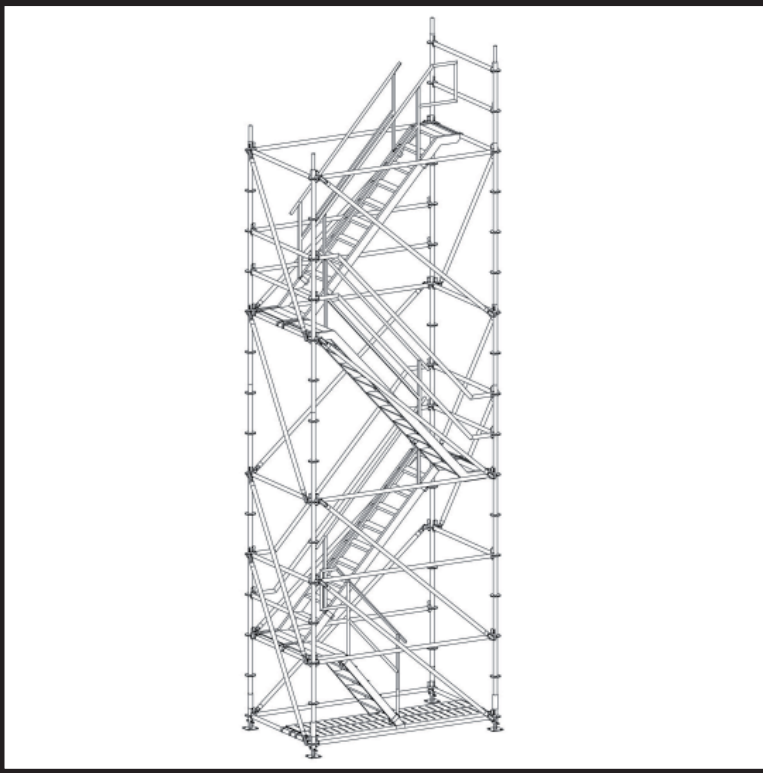
LOGIC
-
EASY
-
BETTER

No.1 for Light Construction Equipment, Scaffolding, Wheelbarrows

www.ALTRAD-Belle.com



ALTRAD... Belle... BarOmix... FOIT... Limex... Richard Fraisse... Plettac...
 COMPACTING... MIXING... CONCRETING... CUTTING... BREAKING... MOVING... WHEELBARROWS... SCAFFOLDING



Load capacity of 2.0 kN/sqm - Alu Stairway Unit.

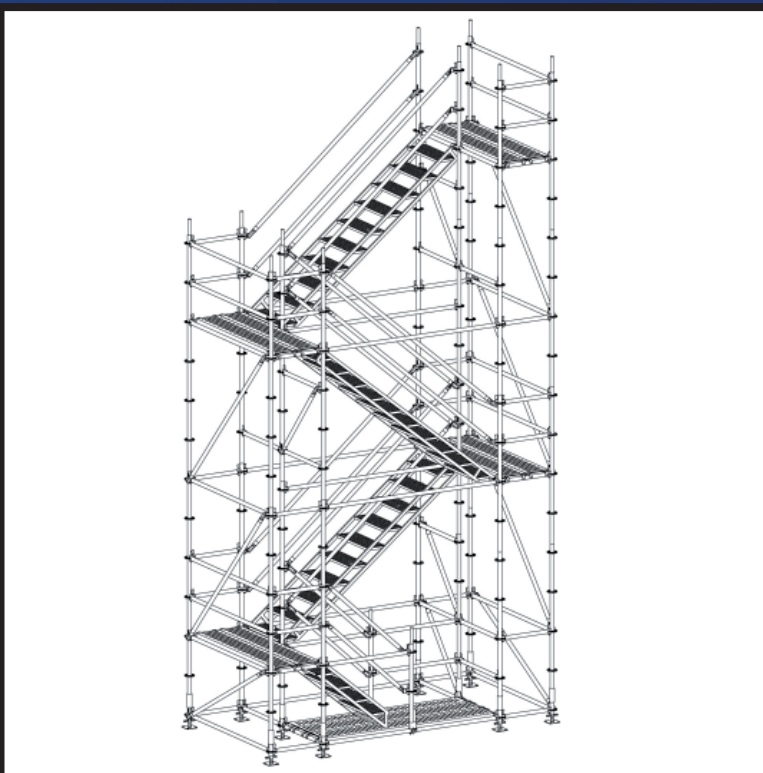
Compatible with traditional tube and fittings and all plettec ascco System Scaffolding.

Alu Site Stairway

Simple but fast and lightweight solution to your access problems. A basic 4 standard contur modular tower using aluminium stairway units with integrated landings.

**Lift Heights:-
1.00m and 2.00m**

**Footprint sizes:-
(p) 2.50m or 3.00m x 1.50m**



Load capacity of 2.0 kN/sqm

Standard ledgers and braces used for side protection.

Site Stairway 2kN

A more substantial 10 standard contur modular tower. Ideal for moving labour and materials to the point of work. The galvanised steel stairways can be assembled quickly and easily.

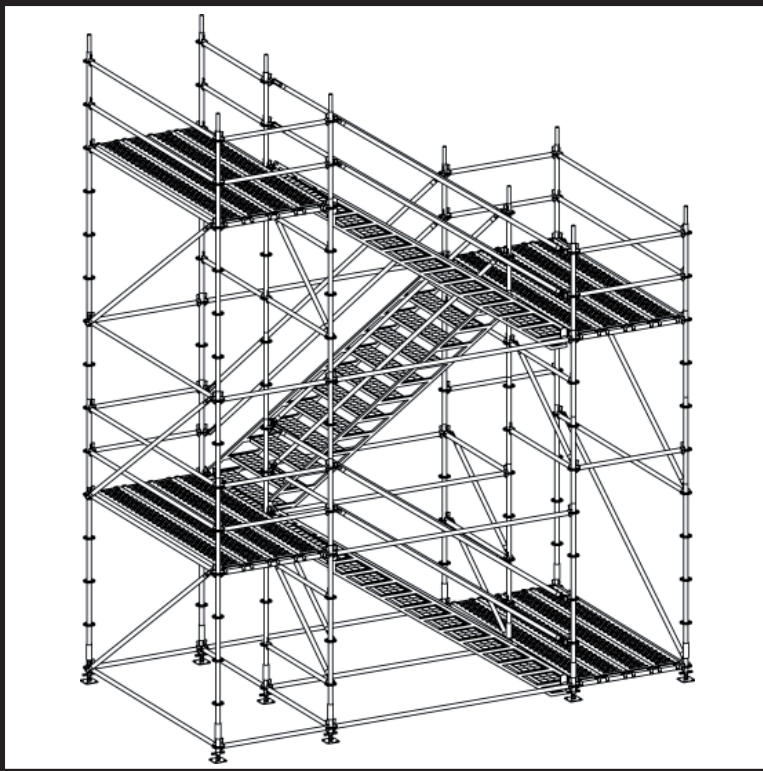
**Lift Heights:-
1.00m and 2.00m**

**Length of stairway bay:-
(p) 2.50m**

**Width of landing:-
(p) 0.75m or 1.10m**

**Length of landing:-
(p) 2.00m or 2.50m**

**Footprint sizes:-
Length of stairway + 2 x width of landing**



Public Access & Event Stairway

A heavy duty stairway tower, designed for the movement of pedestrians in greater numbers, from casual to constant usage. The contur modular system framework ensures fast and efficient erect/dismantle times.

Length of stairway bay:-
(p) 3.00m

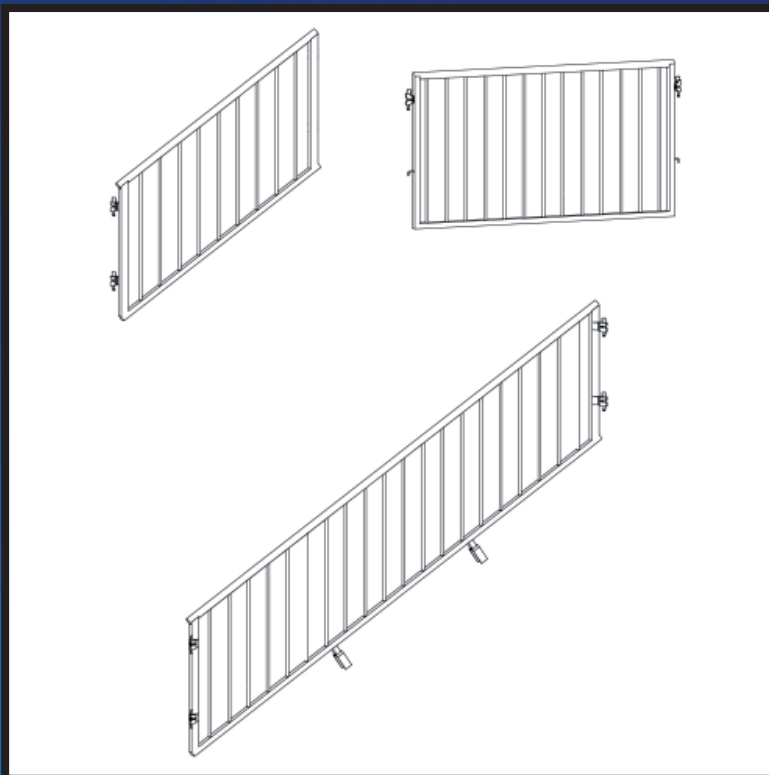
Width of landing:-
(p) 1.10m or 1.40m**

Length of landing:-
(p) 2.50m or 3.00m

Footprint sizes:-
Length of tower x length of landing

Load capacity 5.0 kN/sqm with stair width of 125cm.
Load capacity 7.5 kN/sqm with stair width of 100cm.

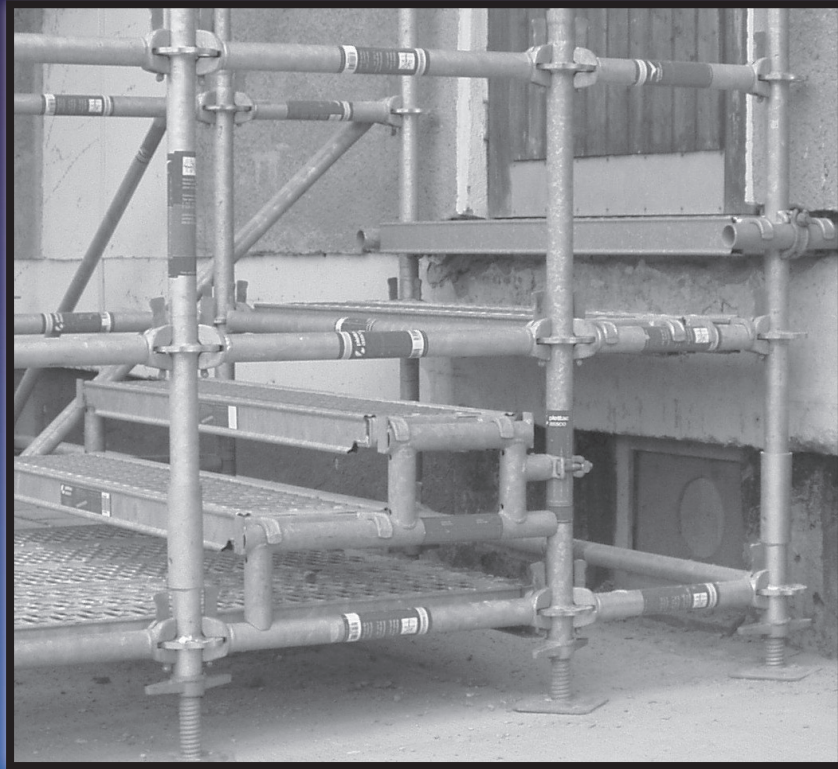
Standard ledgers and braces used for side protection.



Child proof guard rails are available for child protection.

ALTRAD plettac assco systems include stairs, or stairway stringers for both 1.00 m and 2.00 m lift heights. This significantly contributes to the flexibility and adaptive potential for specific site conditions and minimise the number of components required. Thus saving unnecessary components being transported to site and assembly times are considerably reduced.

** the plettac transom measures exactly 1391mm



Belle Group Head Office

Sheen, Nr. Buxton

Derbyshire, SK17 0EU

Tel: (+44) 01298 84606

Fax: (+44) 01298 84722

Email: sales@belle-group.co.uk

www.ALTRAD-Belle.com



Dealer Stamp:

